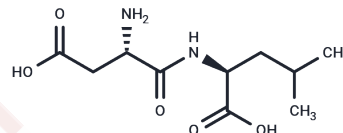


Asp-Leu

Chemical Properties

| | |
|-------------------|---|
| CAS No. : | 3062-14-4 |
| Formula: | C ₁₀ H ₁₈ N ₂ O ₅ |
| Molecular Weight: | 246.26 |
| Storage: | Keep away from moisture Powder: -20°C for 3 years In solvent: -80°C for 1 year <small>Actual storage temperature shall be subject to the COA.</small> |



Biological Description

| | |
|---------------|--|
| Description | Asp-Leu is a dipeptide composed of aspartic acid and leucine that is commonly utilized in biochemical and physiological research as a defined small peptide for studying peptide transport, metabolism, and amino acid utilization in experimental biological systems. |
| Targets(IC50) | Others |

Solubility Information

| | |
|------------|---|
| Solubility | DMSO: 100 mg/mL (406.07 mM), Sonication is recommended. (< 1 mg/ml refers to the product slightly soluble or insoluble) |
|------------|---|

Preparing Stock Solutions

| | 1mg | 5mg | 10mg |
|-------|-----------|------------|------------|
| 1 mM | 4.0607 mL | 20.3037 mL | 40.6075 mL |
| 5 mM | 0.8121 mL | 4.0607 mL | 8.1215 mL |
| 10 mM | 0.4061 mL | 2.0304 mL | 4.0607 mL |
| 50 mM | 0.0812 mL | 0.4061 mL | 0.8121 mL |

Please select the appropriate solvent to prepare the stock solution, according to the solubility of the product in different solvents. Please use it as soon as possible.

Note: The dilution table applies only to solid products. For liquid products, please calculate the stock solution based on the stated concentration and/or density.

Inhibitor · Natural Compounds · Compound Libraries · Recombinant Proteins

This product is for Research Use Only · Not for Human or Veterinary or Therapeutic Use

Tel: 781-999-4286 E_mail: info@targetmol.com Address: 34 Washington Street, Wellesley Hills, MA 02481