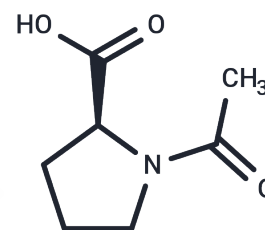


## N-Acetyl-L-proline

## Chemical Properties

CAS No. :	68-95-1
Formula:	C <sub>7</sub> H <sub>11</sub> NO <sub>3</sub>
Molecular Weight:	157.17
Storage:	Powder: -20°C for 3 years   In solvent: -80°C for 1 year Actual storage temperature shall be subject to the COA.



## Biological Description

Description	N-Acetyl-L-proline is a chemically defined derivative of the amino acid L-proline that is widely applied across pharmaceutical formulation development, cosmetic science, and advanced biochemical research due to its distinctive cyclic structure, where it is deliberately employed to improve peptide stability, optimize solubility profiles, enhance membrane permeability, and support drug delivery strategies including experimental evaluation of blood-brain barrier transport while also serving as a robust building block for peptide synthesis, enzyme characterization studies such as angiotensin-converting enzyme investigations, and nutrition-focused cognitive enhancement research.
Targets(IC50)	Others

## Solubility Information

Solubility	DMSO: 100 mg/mL (636.25 mM), Sonication is recommended. (< 1 mg/ml refers to the product slightly soluble or insoluble)
------------	--

## Preparing Stock Solutions

	1mg	5mg	10mg
1 mM	6.3625 mL	31.8127 mL	63.6254 mL
5 mM	1.2725 mL	6.3625 mL	12.7251 mL
10 mM	0.6363 mL	3.1813 mL	6.3625 mL
50 mM	0.1273 mL	0.6363 mL	1.2725 mL

Please select the appropriate solvent to prepare the stock solution, according to the solubility of the product in different solvents. Please use it as soon as possible.

Note: The dilution table applies only to solid products. For liquid products, please calculate the stock solution based on the stated concentration and/or density.

Reference

Kee Kang Y, Sook Park H. Ab initio conformational study of N-acetyl-L-proline-N',N'-dimethylamide: a model for polyproline. Biophys Chem. 2005 Jan 1;113(1):93-101.

**Inhibitor · Natural Compounds · Compound Libraries · Recombinant Proteins**

This product is for Research Use Only · Not for Human or Veterinary or Therapeutic Use

Tel:781-999-4286 E\_mail:info@targetmol.com Address:34 Washington Street,Wellesley Hills,MA 02481