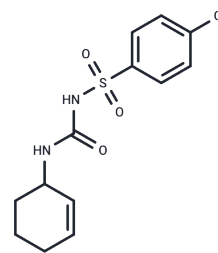


Chlorcyclamide

Chemical Properties

CAS No. :	19523-45-6
Formula:	C ₁₃ H ₁₅ ClN ₂ O ₃ S
Molecular Weight:	314.79
Storage:	Powder: -20°C for 3 years In solvent: -80°C for 1 year Actual storage temperature shall be subject to the COA.



Biological Description

Description	Chlorcyclamide is a sulfonamide compound used in diabetes research.
Targets(IC50)	Others

Preparing Stock Solutions

	1mg	5mg	10mg
1 mM	3.1767 mL	15.8836 mL	31.7672 mL
5 mM	0.6353 mL	3.1767 mL	6.3534 mL
10 mM	0.3177 mL	1.5884 mL	3.1767 mL
50 mM	0.0635 mL	0.3177 mL	0.6353 mL

Please select the appropriate solvent to prepare the stock solution, according to the solubility of the product in different solvents. Please use it as soon as possible.

Note: The dilution table applies only to solid products. For liquid products, please calculate the stock solution based on the stated concentration and/or density.

Inhibitor · Natural Compounds · Compound Libraries · Recombinant Proteins

This product is for Research Use Only · Not for Human or Veterinary or Therapeutic Use

Tel:781-999-4286 E_mail:info@targetmol.com Address:34 Washington Street,Wellesley Hills,MA 02481