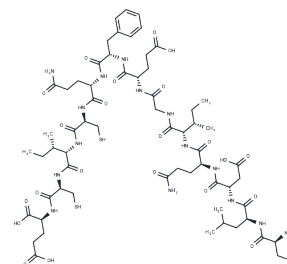


Notch 1

Chemical Properties

CAS No. :	2408730-51-6
Formula:	C62H97N15O22S3
Molecular Weight:	1500.72
Storage:	Keep away from moisture Powder: -20°C for 3 years In solvent: -80°C for 1 year <small>Actual storage temperature shall be subject to the COA.</small>



Biological Description

Description	Notch1 (Notchhomolog 1, translocation-associated) encodes a protein that is a member of the NOTCH family. This type I transmembrane protein family is characterized by common structural features, including an extracellular domain made up of multiple epidermal growth factor-like (EGF) repeats and an intracellular domain composed of various types of domains.
Targets(IC50)	Gamma-secretase
In vitro	Notch 1 can enhance the survival and proliferation of mouse prostate cells by activating the pro-survival NF-κB pathway. In human prostate cancer cell lines, the suppression of Notch 1 and Jagged1 reduces invasion and cell growth in vitro.

Preparing Stock Solutions

	1mg	5mg	10mg
1 mM	0.6663 mL	3.3317 mL	6.6635 mL
5 mM	0.1333 mL	0.6663 mL	1.3327 mL
10 mM	0.0666 mL	0.3332 mL	0.6663 mL
50 mM	0.0133 mL	0.0666 mL	0.1333 mL

Please select the appropriate solvent to prepare the stock solution, according to the solubility of the product in different solvents. Please use it as soon as possible.

Note: The dilution table applies only to solid products. For liquid products, please calculate the stock solution based on the stated concentration and/or density.

Inhibitor · Natural Compounds · Compound Libraries · Recombinant Proteins

This product is for Research Use Only · Not for Human or Veterinary or Therapeutic Use

Tel:781-999-4286 E_mail:info@targetmol.com Address:34 Washington Street,Wellesley Hills,MA 02481