

P15

Chemical Properties

CAS No. : 134335-45-8

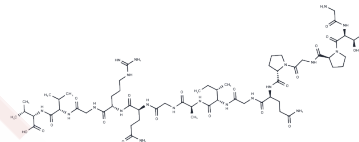
Formula: C₅₉H₁₀₀N₂₀O₁₉

Molecular Weight: 1393.55

Keep away from moisture

Storage: Powder: -20°C for 3 years | In solvent: -80°C for 1 year

Actual storage temperature shall be subject to the COA.



Biological Description

Description	P15 is a collagen-mimetic peptide with the sequence GTPGPQGIAGQRGVV, which mimics the cell-binding domain of human type I collagen. P15 facilitates the adhesion, proliferation, and differentiation of osteoblasts. Biomaterials modified with P15 are applicable in research related to bone regeneration.
Targets(IC50)	Others

Preparing Stock Solutions

	1mg	5mg	10mg
1 mM	0.7176 mL	3.588 mL	7.1759 mL
5 mM	0.1435 mL	0.7176 mL	1.4352 mL
10 mM	0.0718 mL	0.3588 mL	0.7176 mL
50 mM	0.0144 mL	0.0718 mL	0.1435 mL

Please select the appropriate solvent to prepare the stock solution, according to the solubility of the product in different solvents. Please use it as soon as possible.

Note: The dilution table applies only to solid products. For liquid products, please calculate the stock solution based on the stated concentration and/or density.

Inhibitor · Natural Compounds · Compound Libraries · Recombinant Proteins

This product is for Research Use Only · Not for Human or Veterinary or Therapeutic Use

Tel: 781-999-4286

E_mail: info@targetmol.com

Address: 34 Washington Street, Wellesley Hills, MA 02481