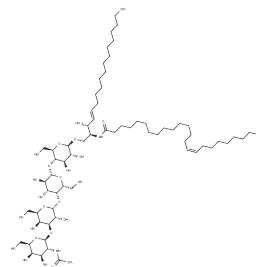


C24:1 GB4 Ceramide (d18:1/24:1)

Chemical Properties

CAS No. : 168780-27-6
Formula: C₆₈H₁₂₄N₂O₂₃
Molecular Weight: 1337.71
Storage: Powder: -20°C for 3 years | In solvent: -80°C for 1 year
Actual storage temperature shall be subject to the COA.



Biological Description

Description	C24:1 GB4 Ceramide (d18:1/24:1) is a type of sphingolipid.
Targets(IC50)	Others

Preparing Stock Solutions

	1mg	5mg	10mg
1 mM	0.7475 mL	3.7377 mL	7.4755 mL
5 mM	0.1495 mL	0.7475 mL	1.4951 mL
10 mM	0.0748 mL	0.3738 mL	0.7475 mL
50 mM	0.015 mL	0.0748 mL	0.1495 mL

Please select the appropriate solvent to prepare the stock solution, according to the solubility of the product in different solvents. Please use it as soon as possible.

Note: The dilution table applies only to solid products. For liquid products, please calculate the stock solution based on the stated concentration and/or density.

Inhibitor · Natural Compounds · Compound Libraries · Recombinant Proteins

This product is for Research Use Only · Not for Human or Veterinary or Therapeutic Use

Tel:781-999-4286 E_mail:info@targetmol.com Address:34 Washington Street,Wellesley Hills,MA 02481