

24:1 CPE (d18/24:1)

Chemical Properties

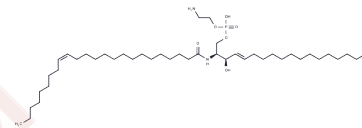
CAS No. : 2456348-78-8

Formula: C44H87N2O6P

Molecular Weight: 771.15

Storage: Powder: -20°C for 3 years | In solvent: -80°C for 1 year

Actual storage temperature shall be subject to the COA.



Biological Description

Description	24:1 CPE (d18/24:1) is a type of phospholipid.
Targets(IC50)	Others

Preparing Stock Solutions

	1mg	5mg	10mg
1 mM	1.2968 mL	6.4838 mL	12.9676 mL
5 mM	0.2594 mL	1.2968 mL	2.5935 mL
10 mM	0.1297 mL	0.6484 mL	1.2968 mL
50 mM	0.0259 mL	0.1297 mL	0.2594 mL

Please select the appropriate solvent to prepare the stock solution, according to the solubility of the product in different solvents. Please use it as soon as possible.

Note: The dilution table applies only to solid products. For liquid products, please calculate the stock solution based on the stated concentration and/or density.

Inhibitor · Natural Compounds · Compound Libraries · Recombinant Proteins

This product is for Research Use Only · Not for Human or Veterinary or Therapeutic Use

Tel:781-999-4286

E_mail:info@targetmol.com

Address:34 Washington Street,Wellesley Hills,MA 02481