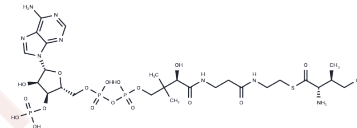


L-Isoleucine-CoA

Chemical Properties

CAS No. :	206440-40-6
Formula:	C ₂₇ H ₄₇ N ₈ O ₁₇ P ₃ S
Molecular Weight:	880.69
Storage:	Powder: -20°C for 3 years In solvent: -80°C for 1 year Actual storage temperature shall be subject to the COA.



Biological Description

Description	L-Isoleucine-CoA (L-Isoleucine-coenzyme A) is a derivative of coenzyme A.
Targets(IC50)	Others

Preparing Stock Solutions

	1mg	5mg	10mg
1 mM	1.1355 mL	5.6774 mL	11.3547 mL
5 mM	0.2271 mL	1.1355 mL	2.2709 mL
10 mM	0.1135 mL	0.5677 mL	1.1355 mL
50 mM	0.0227 mL	0.1135 mL	0.2271 mL

Please select the appropriate solvent to prepare the stock solution, according to the solubility of the product in different solvents. Please use it as soon as possible.

Note: The dilution table applies only to solid products. For liquid products, please calculate the stock solution based on the stated concentration and/or density.

Inhibitor · Natural Compounds · Compound Libraries · Recombinant Proteins

This product is for Research Use Only · Not for Human or Veterinary or Therapeutic Use

Tel:781-999-4286 E_mail:info@targetmol.com Address:34 Washington Street,Wellesley Hills,MA 02481