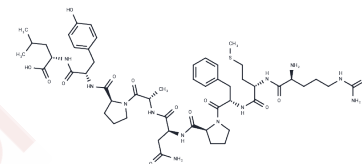


WT1 126-134 peptide

Chemical Properties

CAS No. :	256952-63-3
Formula:	C52H77N13O12S
Molecular Weight:	1108.31
Storage:	Keep away from moisture Powder: -20°C for 3 years In solvent: -80°C for 1 year <i>Actual storage temperature shall be subject to the COA.</i>



Biological Description

Description	WT1 126-134 peptide is a WT1 polypeptide (Wilms' tumor 1 peptide) (RMFPNAPYL) that activates cytotoxic CD8 T cells to target and destroy WT1+ tumor cells. It can form stable complexes with either H-2Db (murine) or HLA-A0201 (human) molecules. The WT1 126-134 peptide/HLA-A0201 complex exhibits high affinity for humanized monoclonal antibodies (IgG1), with a dissociation constant (Kd) of 0.2 nM. This peptide can be utilized as a T cell vaccine or an antibody target.
Targets(IC50)	MHC
In vivo	The WT1 126-134 peptide (100 µg, emulsified in incomplete Freund's adjuvant, administered via intraperitoneal injection once a week for two weeks) can induce epitope-specific CTLs but does not translate into a significant antitumor effect in the TRAMP-C2 model. However, when WT1 126-134 peptide is used in combination with the helper peptide (WT1 35-52) and administered (100 µg, emulsified in incomplete Freund's adjuvant, intraperitoneal injection once a week for three weeks), it significantly enhances CTL induction and delays tumor growth in mice induced by mWT1-C1498 cells.

Preparing Stock Solutions

	1mg	5mg	10mg
1 mM	0.9023 mL	4.5114 mL	9.0227 mL
5 mM	0.1805 mL	0.9023 mL	1.8045 mL
10 mM	0.0902 mL	0.4511 mL	0.9023 mL
50 mM	0.018 mL	0.0902 mL	0.1805 mL

Please select the appropriate solvent to prepare the stock solution, according to the solubility of the product in different solvents. Please use it as soon as possible.

Note: The dilution table applies only to solid products. For liquid products, please calculate the stock solution based on the stated concentration and/or density.

Inhibitor · Natural Compounds · Compound Libraries · Recombinant Proteins

This product is for Research Use Only · Not for Human or Veterinary or Therapeutic Use

Tel:781-999-4286 E_mail:info@targetmol.com Address:34 Washington Street,Wellesley Hills,MA 02481