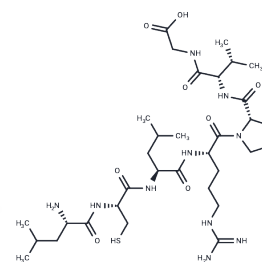


Xentry

Chemical Properties

CAS No. :	1352335-71-7
Formula:	C33H60N10O8S
Molecular Weight:	756.96
Storage:	Keep away from moisture Powder: -20°C for 3 years In solvent: -80°C for 1 year <small>Actual storage temperature shall be subject to the COA.</small>



Biological Description

Description	Xentry is a cell-penetrating peptide (CCP) composed only of seven amino acids from the hepatitis B virus: LCLRPVG. By linking with anti-B-raf antibodies and siRNA, Xentry can target and eliminate B-raf-dependent melanoma cells. It can be administered alone or combined with β -galactosidase to deliver substances to most tissues in mice, except circulating blood cells. Xentry is useful for delivering macromolecules such as antibodies, siRNA, and enzymes.
Targets(IC50)	HBV
In vitro	Xentry (10 μ M) penetrates adherent cells in an energy-dependent manner, including the cell lines HepG2 (liver), C32 (melanoma), DU145 (prostate), H441 (lung cancer), BT474 (breast), Cos (kidney), and Rin-m5F (pancreatic beta cells), but does not penetrate non-adherent resting blood cells. When conjugated with β -galactosidase (10-20 μ M, 4 h), Xentry is internalized by viable HepG2 cells and enters through the multi-ligand glycan pathway. Additionally, Xentry (1 h) effectively delivers antibodies and siRNA to melanoma cells, inducing apoptosis in B-raf dependent melanoma cells.
In vivo	Within 15 minutes of a single intravenous dose, Cy7-labeled Xentry (2-20 μ g/mL) disperses extensively across various tissues, with notable accumulation in epithelial tissues such as the intestines, stomach, and bronchi; 24 hours later, it predominantly remains in the liver and kidneys in Balb/c mice. TAMRA-labeled Xentry (2-100 μ g/mL), also administered in a single intravenous dose, effectively delivers macromolecular complexes to multiple tissues in Balb/c mice, particularly concentrating in intestinal epithelial cells and splenic marginal sinuses.

Preparing Stock Solutions

	1mg	5mg	10mg
1 mM	1.3211 mL	6.6054 mL	13.2107 mL
5 mM	0.2642 mL	1.3211 mL	2.6421 mL
10 mM	0.1321 mL	0.6605 mL	1.3211 mL
50 mM	0.0264 mL	0.1321 mL	0.2642 mL

Please select the appropriate solvent to prepare the stock solution, according to the solubility of the product in different solvents. Please use it as soon as possible.

Note: The dilution table applies only to solid products. For liquid products, please calculate the stock solution based on the stated concentration and/or density.

Inhibitor · Natural Compounds · Compound Libraries · Recombinant Proteins

This product is for Research Use Only · Not for Human or Veterinary or Therapeutic Use

Tel:781-999-4286 E_mail:info@targetmol.com Address:34 Washington Street,Wellesley Hills,MA 02481