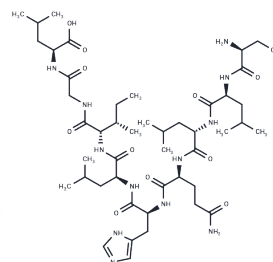


PRAME peptide (425-433)

Chemical Properties

CAS No. :	329314-98-9
Formula:	C46H80N12O12
Molecular Weight:	993.20
Storage:	Keep away from moisture Powder: -20°C for 3 years In solvent: -80°C for 1 year <small>Actual storage temperature shall be subject to the COA.</small>



Biological Description

Description	PRAME peptide (425-433) is a peptide corresponding to amino acids 425-433 of PRAME (Preferentially Expressed Antigen in Melanoma), found in melanoma. It can be used to stimulate human PRAME-specific CD8+ T cells.
Targets(IC50)	Others

Preparing Stock Solutions

	1mg	5mg	10mg
1 mM	1.0068 mL	5.0342 mL	10.0685 mL
5 mM	0.2014 mL	1.0068 mL	2.0137 mL
10 mM	0.1007 mL	0.5034 mL	1.0068 mL
50 mM	0.0201 mL	0.1007 mL	0.2014 mL

Please select the appropriate solvent to prepare the stock solution, according to the solubility of the product in different solvents. Please use it as soon as possible.

Note: The dilution table applies only to solid products. For liquid products, please calculate the stock solution based on the stated concentration and/or density.

Inhibitor · Natural Compounds · Compound Libraries · Recombinant Proteins

This product is for Research Use Only · Not for Human or Veterinary or Therapeutic Use

Tel:781-999-4286 E_mail:info@targetmol.com Address:34 Washington Street,Wellesley Hills,MA 02481