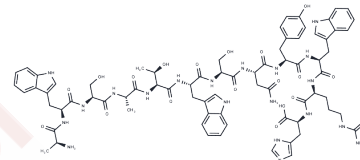


Pep-20

Chemical Properties

CAS No. :	3056822-31-9
Formula:	C74H93N21O18
Molecular Weight:	1564.66
Storage:	Keep away from moisture Powder: -20°C for 3 years In solvent: -80°C for 1 year <small>Actual storage temperature shall be subject to the COA.</small>



Biological Description

Description	Pep-20 is a CD47/SIRPα blocking peptide with KD values of 2.91 μM for human CD47 and 3.63 μM for mouse CD47. It inhibits the CD47/SIRPα interaction with IC50 values of 24.56 μM for humans and 12.03 μM for mice. Pep-20 also exhibits antitumor activity.
Targets(IC50)	Others

Preparing Stock Solutions

	1mg	5mg	10mg
1 mM	0.6391 mL	3.1956 mL	6.3912 mL
5 mM	0.1278 mL	0.6391 mL	1.2782 mL
10 mM	0.0639 mL	0.3196 mL	0.6391 mL
50 mM	0.0128 mL	0.0639 mL	0.1278 mL

Please select the appropriate solvent to prepare the stock solution, according to the solubility of the product in different solvents. Please use it as soon as possible.

Note: The dilution table applies only to solid products. For liquid products, please calculate the stock solution based on the stated concentration and/or density.

Inhibitor · Natural Compounds · Compound Libraries · Recombinant Proteins

This product is for Research Use Only · Not for Human or Veterinary or Therapeutic Use

Tel: 781-999-4286 E_mail: info@targetmol.com Address: 34 Washington Street, Wellesley Hills, MA 02481