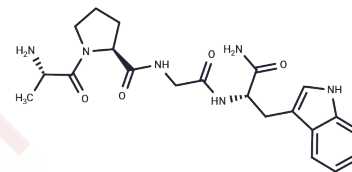


## APGW-amide

## Chemical Properties

CAS No. :	126675-52-3
Formula:	C <sub>21</sub> H <sub>28</sub> N <sub>6</sub> O <sub>4</sub>
Molecular Weight:	428.49
Storage:	Keep away from moisture Powder: -20°C for 3 years   In solvent: -80°C for 1 year <small>Actual storage temperature shall be subject to the COA.</small>



## Biological Description

Description	APGW-amide is a neuropeptide capable of controlling the growth of pseudomale structures and promoting body growth in <i>Haliothis asinina</i> . It inhibits the <i>Achatina</i> neuron type, regulating currents induced by neuroactive compounds in neurons. APGW-amide induces a rapid increase in $[Ca^{2+}]_i$ in Fura-2/AM-loaded PC12 cells and is useful for studies of the nervous system.
Targets(IC50)	Endogenous Metabolite
In vitro	APGW-amide (3 $\mu$ M) enhances the membrane conductance (g) value measured prior to I out induced by erythro-l-BHGA, with an ED50 of 76.9 ms, slope of 0.89274, Hill coefficient of 1.59453, and E max of 5.54 nA. It also inhibits the I out caused by Dopamine, showing an ED50 of 29.5 ms, slope of 1.02386, Hill coefficient of 1.9761, and E max of 0.38 nA, while increasing the pre-measured g value for Dopamine-induced I out. Additionally, APGW-amide (3 $\mu$ M) suppresses the rapid component of I in induced by Serotonin, with an ED50 of 18.5 ms, slope of 0.8268, Hill coefficient of 1.6557, and E max of 0.72 nA. Furthermore, APGW-amide (30 $\mu$ M) causes a rapid increase in $[Ca^{2+}]_i$ in Fura-2/AM-loaded PC12 cells.
In vivo	APGW-amide, administered weekly at 20-200 ng/g for 14 weeks, enhances somatic growth in <i>Haliothis asinina</i> . Additionally, when given every other day for 14 days at concentrations of 0.0000001-0.01 nM, APGW-amide can induce imposex in the mud snail <i>Ilyanassa obsoleta</i> .

### Preparing Stock Solutions

---

	<b>1mg</b>	<b>5mg</b>	<b>10mg</b>
1 mM	2.3338 mL	11.6689 mL	23.3378 mL
5 mM	0.4668 mL	2.3338 mL	4.6676 mL
10 mM	0.2334 mL	1.1669 mL	2.3338 mL
50 mM	0.0467 mL	0.2334 mL	0.4668 mL

---

Please select the appropriate solvent to prepare the stock solution, according to the solubility of the product in different solvents. Please use it as soon as possible.

Note: The dilution table applies only to solid products. For liquid products, please calculate the stock solution based on the stated concentration and/or density.

**Inhibitor · Natural Compounds · Compound Libraries · Recombinant Proteins**

This product is for Research Use Only · Not for Human or Veterinary or Therapeutic Use

Tel:781-999-4286 E\_mail:info@targetmol.com Address:34 Washington Street,Wellesley Hills,MA 02481