

## Endothelin (16-21)

## Chemical Properties

CAS No. : 121377-67-1

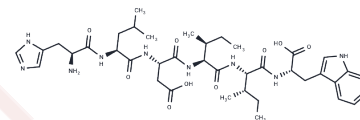
Formula: C39H57N9O9

Molecular Weight: 795.93

Keep away from moisture

Storage: Powder: -20°C for 3 years | In solvent: -80°C for 1 year

Actual storage temperature shall be subject to the COA.



## Biological Description

Description	Endothelin (16-21) is a selective ETB receptor agonist with an EC50 of 228 nM in guinea pig bronchial rings. It induces smooth muscle contraction and shows potential for research into respiratory conditions such as asthma, as well as cardiovascular diseases like hypertension.
Targets(IC50)	Endothelin Receptor

## Preparing Stock Solutions

	1mg	5mg	10mg
1 mM	1.2564 mL	6.282 mL	12.5639 mL
5 mM	0.2513 mL	1.2564 mL	2.5128 mL
10 mM	0.1256 mL	0.6282 mL	1.2564 mL
50 mM	0.0251 mL	0.1256 mL	0.2513 mL

Please select the appropriate solvent to prepare the stock solution, according to the solubility of the product in different solvents. Please use it as soon as possible.

Note: The dilution table applies only to solid products. For liquid products, please calculate the stock solution based on the stated concentration and/or density.

Inhibitor · Natural Compounds · Compound Libraries · Recombinant Proteins

This product is for Research Use Only · Not for Human or Veterinary or Therapeutic Use

Tel: 781-999-4286

E\_mail: info@targetmol.com

Address: 34 Washington Street, Wellesley Hills, MA 02481