

DDDEKC

Chemical Properties

CAS No. : 2097620-33-0

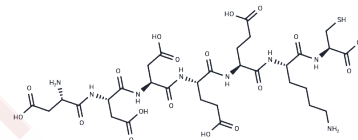
Formula: C31H48N8O18S

Molecular Weight: 852.82

Keep away from moisture

Storage: Powder: -20°C for 3 years | In solvent: -80°C for 1 year

Actual storage temperature shall be subject to the COA.



Biological Description

Description	DDDEKC is a biomimetic peptide sequence that selectively adheres to the enamel surface (mimicking the role of salivary-acquired pellicle proteins like sialic acid), acting as a "targeted guide" for enamel remineralization. It promotes the regeneration of hydroxyapatite (HAP) and holds potential for in situ remineralization research of enamel demineralization damage, such as in dental caries.
Targets(IC50)	Others

Preparing Stock Solutions

	1mg	5mg	10mg
1 mM	1.1726 mL	5.8629 mL	11.7258 mL
5 mM	0.2345 mL	1.1726 mL	2.3452 mL
10 mM	0.1173 mL	0.5863 mL	1.1726 mL
50 mM	0.0235 mL	0.1173 mL	0.2345 mL

Please select the appropriate solvent to prepare the stock solution, according to the solubility of the product in different solvents. Please use it as soon as possible.

Note: The dilution table applies only to solid products. For liquid products, please calculate the stock solution based on the stated concentration and/or density.

Inhibitor · Natural Compounds · Compound Libraries · Recombinant Proteins

This product is for Research Use Only · Not for Human or Veterinary or Therapeutic Use

Tel:781-999-4286 E_mail:info@targetmol.com Address:34 Washington Street,Wellesley Hills,MA 02481