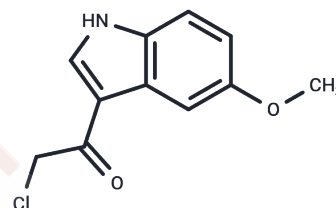


## 2-Chloro-1-(5-methoxy-1H-indol-3-yl)-ethanone

## Chemical Properties

CAS No. :	30030-91-2
Formula:	C <sub>11</sub> H <sub>10</sub> ClNO <sub>2</sub>
Molecular Weight:	223.66
Storage:	Powder: -20°C for 3 years   In solvent: -80°C for 1 year Actual storage temperature shall be subject to the COA.



## Biological Description

Description	2-Chloro-1-(5-methoxy-1H-indol-3-yl)-ethanone is a pharmaceutical intermediate used in the synthesis of various active compounds.
Targets(IC50)	Others

## Preparing Stock Solutions

	1mg	5mg	10mg
1 mM	4.4711 mL	22.3554 mL	44.7107 mL
5 mM	0.8942 mL	4.4711 mL	8.9421 mL
10 mM	0.4471 mL	2.2355 mL	4.4711 mL
50 mM	0.0894 mL	0.4471 mL	0.8942 mL

Please select the appropriate solvent to prepare the stock solution, according to the solubility of the product in different solvents. Please use it as soon as possible.

Note: The dilution table applies only to solid products. For liquid products, please calculate the stock solution based on the stated concentration and/or density.

Inhibitor · Natural Compounds · Compound Libraries · Recombinant Proteins

This product is for Research Use Only · Not for Human or Veterinary or Therapeutic Use

Tel:781-999-4286 E\_mail:info@targetmol.com Address:34 Washington Street,Wellesley Hills,MA 02481