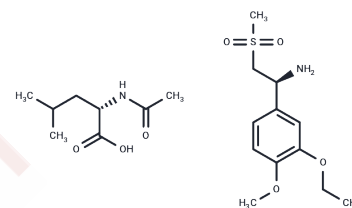


(S)-1-(3-Ethoxy-4-methoxyphenyl)-2-(methylsulfonyl)ethylamine N-acetyl-L-leucine

Chemical Properties

CAS No. :	608141-43-1
Formula:	C ₂₀ H ₃₄ N ₂ O ₇ S
Molecular Weight:	446.56
Storage:	Powder: -20°C for 3 years In solvent: -80°C for 1 year Actual storage temperature shall be subject to the COA.



Biological Description

Description	(S)-1-(3-Ethoxy-4-methoxyphenyl)-2-(methylsulfonyl)ethylamine N-acetyl-L-leucine is a pharmaceutical intermediate used in the synthesis of various active compounds.
Targets(IC50)	Others

Preparing Stock Solutions

	1mg	5mg	10mg
1 mM	2.2393 mL	11.1967 mL	22.3934 mL
5 mM	0.4479 mL	2.2393 mL	4.4787 mL
10 mM	0.2239 mL	1.1197 mL	2.2393 mL
50 mM	0.0448 mL	0.2239 mL	0.4479 mL

Please select the appropriate solvent to prepare the stock solution, according to the solubility of the product in different solvents. Please use it as soon as possible.

Note: The dilution table applies only to solid products. For liquid products, please calculate the stock solution based on the stated concentration and/or density.

Inhibitor · Natural Compounds · Compound Libraries · Recombinant Proteins

This product is for Research Use Only · Not for Human or Veterinary or Therapeutic Use

Tel: 781-999-4286 E_mail: info@targetmol.com Address: 34 Washington Street, Wellesley Hills, MA 02481