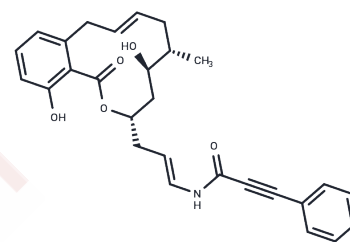


## Saliphenylhalamide

## Chemical Properties

CAS No. :	398478-65-4
Formula:	C <sub>28</sub> H <sub>29</sub> N <sub>5</sub> O <sub>5</sub>
Molecular Weight:	459.53
Storage:	Powder: -20°C for 3 years   In solvent: -80°C for 1 year Actual storage temperature shall be subject to the COA.



## Biological Description

Description	Saliphenylhalamide (Saliphe) is an inhibitor of the influenza A virus (IAV). It targets the host cell's vacuolar ATPase, preventing endosomal acidification.
Targets(IC50)	Influenza Virus

## Preparing Stock Solutions

	1mg	5mg	10mg
1 mM	2.1761 mL	10.8807 mL	21.7614 mL
5 mM	0.4352 mL	2.1761 mL	4.3523 mL
10 mM	0.2176 mL	1.0881 mL	2.1761 mL
50 mM	0.0435 mL	0.2176 mL	0.4352 mL

Please select the appropriate solvent to prepare the stock solution, according to the solubility of the product in different solvents. Please use it as soon as possible.

Note: The dilution table applies only to solid products. For liquid products, please calculate the stock solution based on the stated concentration and/or density.

Inhibitor · Natural Compounds · Compound Libraries · Recombinant Proteins

This product is for Research Use Only · Not for Human or Veterinary or Therapeutic Use

Tel: 781-999-4286 E\_mail: info@targetmol.com Address: 34 Washington Street, Wellesley Hills, MA 02481