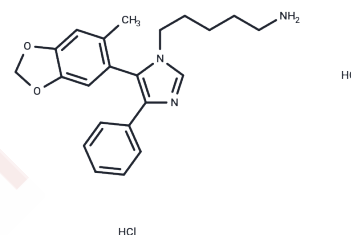


Cs-2d

Chemical Properties

CAS No. : 2928129-57-9
 Formula: C₂₂H₂₇Cl₂N₃O₂
 Molecular Weight: 436.38
 Storage: Powder: -20°C for 3 years | In solvent: -80°C for 1 year
 Actual storage temperature shall be subject to the COA.



Biological Description

| | |
|---------------|--|
| Description | Cs-2d is a selective inhibitor of the ceramide synthase Cer1. It exhibits potent inhibitory activity against Cer1 in <i>C. neoformans</i> , while maintaining low off-target effects on human hCerS1. Cs-2d demonstrates strong antifungal activity and significantly suppresses fungal growth. It is applicable in studies of invasive fungal infections. |
| Targets(IC50) | Acyltransferase,Antifungal |

Preparing Stock Solutions

| | 1mg | 5mg | 10mg |
|-------|-----------|------------|------------|
| 1 mM | 2.2916 mL | 11.4579 mL | 22.9158 mL |
| 5 mM | 0.4583 mL | 2.2916 mL | 4.5832 mL |
| 10 mM | 0.2292 mL | 1.1458 mL | 2.2916 mL |
| 50 mM | 0.0458 mL | 0.2292 mL | 0.4583 mL |

Please select the appropriate solvent to prepare the stock solution, according to the solubility of the product in different solvents. Please use it as soon as possible.

Note: The dilution table applies only to solid products. For liquid products, please calculate the stock solution based on the stated concentration and/or density.

Inhibitor · Natural Compounds · Compound Libraries · Recombinant Proteins

This product is for Research Use Only · Not for Human or Veterinary or Therapeutic Use

Tel:781-999-4286 E_mail:info@targetmol.com Address:34 Washington Street,Wellesley Hills,MA 02481