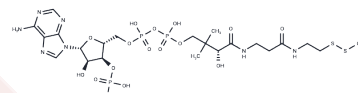


## CoA-Methyl-disulfide

## Chemical Properties

CAS No. :	59212-62-3
Formula:	C <sub>22</sub> H <sub>38</sub> N <sub>7</sub> O <sub>16</sub> P <sub>3</sub> S <sub>2</sub>
Molecular Weight:	813.63
Storage:	Powder: -20°C for 3 years   In solvent: -80°C for 1 year Actual storage temperature shall be subject to the COA.



## Biological Description

Description	CoA-Methyl-disulfide (Methyl-coenzyme A disulfide 1) is a derivative of coenzyme A.
Targets(IC50)	Others

## Preparing Stock Solutions

	1mg	5mg	10mg
1 mM	1.2291 mL	6.1453 mL	12.2906 mL
5 mM	0.2458 mL	1.2291 mL	2.4581 mL
10 mM	0.1229 mL	0.6145 mL	1.2291 mL
50 mM	0.0246 mL	0.1229 mL	0.2458 mL

Please select the appropriate solvent to prepare the stock solution, according to the solubility of the product in different solvents. Please use it as soon as possible.

Note: The dilution table applies only to solid products. For liquid products, please calculate the stock solution based on the stated concentration and/or density.

**Inhibitor · Natural Compounds · Compound Libraries · Recombinant Proteins**

This product is for Research Use Only · Not for Human or Veterinary or Therapeutic Use

Tel:781-999-4286 E\_mail:info@targetmol.com Address:34 Washington Street,Wellesley Hills,MA 02481