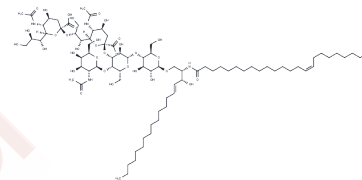


C24:1 GD2 Ceramide (d18:1/24:1)

Chemical Properties

CAS No. :	3077081-43-4
Formula:	C84H148N4O34
Molecular Weight:	1758.08
Storage:	Powder: -20°C for 3 years In solvent: -80°C for 1 year Actual storage temperature shall be subject to the COA.



Biological Description

Description	C24:1 GD2 Ceramide (d18:1/24:1) is a type of sphingoid base linked to a fatty acid. It can interact with other membrane lipids, securing GD2 firmly on the cell surface.
Targets(IC50)	Others

Preparing Stock Solutions

	1mg	5mg	10mg
1 mM	0.5688 mL	2.844 mL	5.688 mL
5 mM	0.1138 mL	0.5688 mL	1.1376 mL
10 mM	0.0569 mL	0.2844 mL	0.5688 mL
50 mM	0.0114 mL	0.0569 mL	0.1138 mL

Please select the appropriate solvent to prepare the stock solution, according to the solubility of the product in different solvents. Please use it as soon as possible.

Note: The dilution table applies only to solid products. For liquid products, please calculate the stock solution based on the stated concentration and/or density.

Inhibitor · Natural Compounds · Compound Libraries · Recombinant Proteins

This product is for Research Use Only · Not for Human or Veterinary or Therapeutic Use

Tel:781-999-4286 E_mail:info@targetmol.com Address:34 Washington Street,Wellesley Hills,MA 02481