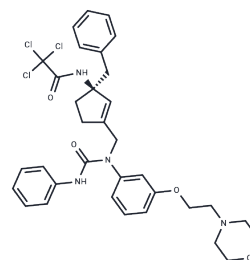


RWJ-68022

Chemical Properties

CAS No. : 223442-22-6
 Formula: C₃₄H₃₇Cl₃N₄O₄
 Molecular Weight: 672.04
 Storage: Powder: -20°C for 3 years | In solvent: -80°C for 1 year
 Actual storage temperature shall be subject to the COA.



Biological Description

Description	RWJ-68022 (Example 9) is a cyclopentene derivative that serves as a motilin receptor antagonist. It competes with motilin and erythromycin at motilin receptor sites and is applicable in research on gastrointestinal disorders.
Targets(IC50)	Motilin Receptor

Preparing Stock Solutions

	1mg	5mg	10mg
1 mM	1.488 mL	7.440 mL	14.8801 mL
5 mM	0.2976 mL	1.488 mL	2.976 mL
10 mM	0.1488 mL	0.744 mL	1.488 mL
50 mM	0.0298 mL	0.1488 mL	0.2976 mL

Please select the appropriate solvent to prepare the stock solution, according to the solubility of the product in different solvents. Please use it as soon as possible.

Note: The dilution table applies only to solid products. For liquid products, please calculate the stock solution based on the stated concentration and/or density.

Inhibitor · Natural Compounds · Compound Libraries · Recombinant Proteins

This product is for Research Use Only · Not for Human or Veterinary or Therapeutic Use

Tel: 781-999-4286 E_mail: info@targetmol.com Address: 34 Washington Street, Wellesley Hills, MA 02481