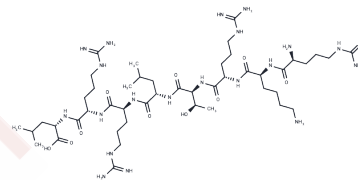


## EGFR Peptide

## Chemical Properties

CAS No. :	152246-44-1
Formula:	C <sub>46</sub> H <sub>91</sub> N <sub>21</sub> O <sub>10</sub>
Molecular Weight:	1098.35
Storage:	Keep away from moisture Powder: -20°C for 3 years   In solvent: -80°C for 1 year <small>Actual storage temperature shall be subject to the COA.</small>



## Biological Description

Description	EGFRPeptide is a substrate peptide for PKC. It can be used for assaying PKC activity.
Targets(IC50)	PKC

## Preparing Stock Solutions

	1mg	5mg	10mg
1 mM	0.9105 mL	4.5523 mL	9.1046 mL
5 mM	0.1821 mL	0.9105 mL	1.8209 mL
10 mM	0.091 mL	0.4552 mL	0.9105 mL
50 mM	0.0182 mL	0.091 mL	0.1821 mL

Please select the appropriate solvent to prepare the stock solution, according to the solubility of the product in different solvents. Please use it as soon as possible.

Note: The dilution table applies only to solid products. For liquid products, please calculate the stock solution based on the stated concentration and/or density.

**Inhibitor · Natural Compounds · Compound Libraries · Recombinant Proteins**

This product is for Research Use Only · Not for Human or Veterinary or Therapeutic Use

Tel: 781-999-4286 E\_mail: info@targetmol.com Address: 34 Washington Street, Wellesley Hills, MA 02481