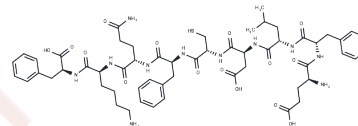


Eps8 peptide 327

Chemical Properties

CAS No. :	1988684-26-9
Formula:	C56H77N11O15S
Molecular Weight:	1176.34
Storage:	Keep away from moisture Powder: -20°C for 3 years In solvent: -80°C for 1 year <small>Actual storage temperature shall be subject to the COA.</small>



Biological Description

Description	Eps8 peptide 327 is an HLA-A*2402-restricted peptide antigen derived from the Eps8 protein. It exhibits potent antitumor activity and significant cytotoxicity. Eps8 peptide 327 effectively inhibits cancer cell proliferation, induces apoptosis, and disrupts the EGFR signaling pathway by inhibiting the expression of downstream signals such as IL-2, TNF- α , and IFN- γ , as well as impeding the Eps8/EGFR interaction. It significantly suppresses tumor growth in HT-29 xenograft models.
Targets(IC50)	Apoptosis,EGFR,Complement System,IFNAR,Interleukin,TNF

Preparing Stock Solutions

	1mg	5mg	10mg
1 mM	0.8501 mL	4.2505 mL	8.5009 mL
5 mM	0.170 mL	0.8501 mL	1.7002 mL
10 mM	0.085 mL	0.425 mL	0.8501 mL
50 mM	0.017 mL	0.085 mL	0.170 mL

Please select the appropriate solvent to prepare the stock solution, according to the solubility of the product in different solvents. Please use it as soon as possible.

Note: The dilution table applies only to solid products. For liquid products, please calculate the stock solution based on the stated concentration and/or density.

Inhibitor · Natural Compounds · Compound Libraries · Recombinant Proteins

This product is for Research Use Only · Not for Human or Veterinary or Therapeutic Use

Tel:781-999-4286 E_mail:info@targetmol.com Address:34 Washington Street,Wellesley Hills,MA 02481