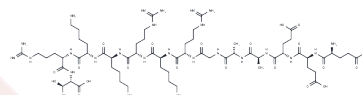


## NLS-CPP

## Chemical Properties

CAS No. :	1228086-59-6
Formula:	C63H115N25O21
Molecular Weight:	1558.74
Storage:	Keep away from moisture Powder: -20°C for 3 years   In solvent: -80°C for 1 year <small>Actual storage temperature shall be subject to the COA.</small>



## Biological Description

Description	NLS-CPP is a nuclear localization signal (NLS)-cell penetrating peptide that includes the NLS from OCT6. It facilitates nuclear delivery and can be utilized in the study of chronic inflammatory diseases, including metabolic dysfunction-associated steatohepatitis (MASH) and osteoarthritis (OA).
Targets(IC50)	Others

## Preparing Stock Solutions

	1mg	5mg	10mg
1 mM	0.6415 mL	3.2077 mL	6.4154 mL
5 mM	0.1283 mL	0.6415 mL	1.2831 mL
10 mM	0.0642 mL	0.3208 mL	0.6415 mL
50 mM	0.0128 mL	0.0642 mL	0.1283 mL

Please select the appropriate solvent to prepare the stock solution, according to the solubility of the product in different solvents. Please use it as soon as possible.

Note: The dilution table applies only to solid products. For liquid products, please calculate the stock solution based on the stated concentration and/or density.

**Inhibitor · Natural Compounds · Compound Libraries · Recombinant Proteins**

This product is for Research Use Only · Not for Human or Veterinary or Therapeutic Use

Tel: 781-999-4286 E\_mail: info@targetmol.com Address: 34 Washington Street, Wellesley Hills, MA 02481