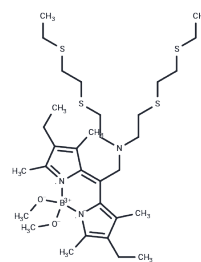


Coppersensor-3

Chemical Properties

CAS No. :	1335151-56-8
Formula:	C ₃₂ H ₅₆ BN ₃ O ₂ S ₄
Molecular Weight:	653.88
Storage:	Keep away from direct sunlight Powder: -20°C for 3 years In solvent: -80°C for 1 year <small>Actual storage temperature shall be subject to the COA.</small>



Biological Description

Description	Coppersensor-3 (CS3) is a bright small molecule fluorescent probe designed for the selective detection of Cu(I). It offers high selectivity and sensitivity, allowing for imaging of the labile copper pool at endogenous basal levels in living cells. Coppersensor-3 is applicable in studies of copper cell biology.
Targets(IC50)	Others

Preparing Stock Solutions

	1mg	5mg	10mg
1 mM	1.5293 mL	7.6467 mL	15.2933 mL
5 mM	0.3059 mL	1.5293 mL	3.0587 mL
10 mM	0.1529 mL	0.7647 mL	1.5293 mL
50 mM	0.0306 mL	0.1529 mL	0.3059 mL

Please select the appropriate solvent to prepare the stock solution, according to the solubility of the product in different solvents. Please use it as soon as possible.

Note: The dilution table applies only to solid products. For liquid products, please calculate the stock solution based on the stated concentration and/or density.

Inhibitor · Natural Compounds · Compound Libraries · Recombinant Proteins

This product is for Research Use Only · Not for Human or Veterinary or Therapeutic Use

Tel:781-999-4286 E_mail:info@targetmol.com Address:34 Washington Street,Wellesley Hills,MA 02481