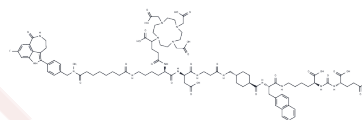


## ADP-ribose/PARP-IN-1

## Chemical Properties

CAS No. :	3047557-92-3
Formula:	C92H125FN16O26
Molecular Weight:	1890.07
Storage:	Powder: -20°C for 3 years   In solvent: -80°C for 1 year Actual storage temperature shall be subject to the COA.



## Biological Description

Description	ADP-ribose/PARP-IN-1 (Compound Ex.16) is a conjugated compound composed of a disease-targeting segment, a PARP inhibitor section, a cleavable linker, and a chelating agent. It targets specific sites via its disease-targeting part, delivering the PARP inhibitor selectively to tumor cells. Under suitable conditions, the cleavable linker releases the PARP inhibitor to hinder DNA damage repair by inhibiting PARP, while the chelating agent transports a radionuclide for cytotoxic action. This compound is applicable in prostate cancer research.
Targets(IC50)	PARP

## Preparing Stock Solutions

	1mg	5mg	10mg
1 mM	0.5291 mL	2.6454 mL	5.2908 mL
5 mM	0.1058 mL	0.5291 mL	1.0582 mL
10 mM	0.0529 mL	0.2645 mL	0.5291 mL
50 mM	0.0106 mL	0.0529 mL	0.1058 mL

Please select the appropriate solvent to prepare the stock solution, according to the solubility of the product in different solvents. Please use it as soon as possible.

Note: The dilution table applies only to solid products. For liquid products, please calculate the stock solution based on the stated concentration and/or density.

**Inhibitor · Natural Compounds · Compound Libraries · Recombinant Proteins**

This product is for Research Use Only · Not for Human or Veterinary or Therapeutic Use

Tel: 781-999-4286 E\_mail: info@targetmol.com Address: 34 Washington Street, Wellesley Hills, MA 02481