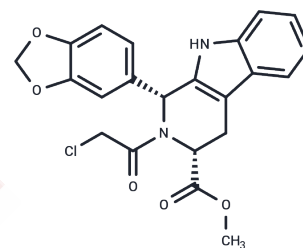


## Chloropretadalafil

## Chemical Properties

CAS No. :	171489-59-1
Formula:	C <sub>22</sub> H <sub>19</sub> ClN <sub>2</sub> O <sub>5</sub>
Molecular Weight:	426.85
Storage:	Powder: -20°C for 3 years   In solvent: -80°C for 1 year Actual storage temperature shall be subject to the COA.



## Biological Description

Description	Chloropretadalafil (Compound 31) serves as a crucial intermediate in the synthesis of Tadalafil derivatives.
Targets(IC50)	Others

## Preparing Stock Solutions

	1mg	5mg	10mg
1 mM	2.3427 mL	11.7137 mL	23.4274 mL
5 mM	0.4685 mL	2.3427 mL	4.6855 mL
10 mM	0.2343 mL	1.1714 mL	2.3427 mL
50 mM	0.0469 mL	0.2343 mL	0.4685 mL

Please select the appropriate solvent to prepare the stock solution, according to the solubility of the product in different solvents. Please use it as soon as possible.

Note: The dilution table applies only to solid products. For liquid products, please calculate the stock solution based on the stated concentration and/or density.

Inhibitor · Natural Compounds · Compound Libraries · Recombinant Proteins

This product is for Research Use Only · Not for Human or Veterinary or Therapeutic Use

Tel: 781-999-4286 E\_mail: info@targetmol.com Address: 34 Washington Street, Wellesley Hills, MA 02481