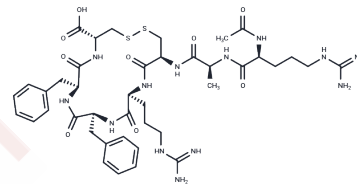


## Peptide R analogue 10

## Chemical Properties

CAS No. :	1998129-59-1
Formula:	C41H59N13O9S2
Molecular Weight:	942.12
Storage:	Keep away from moisture Powder: -20°C for 3 years   In solvent: -80°C for 1 year <small>Actual storage temperature shall be subject to the COA.</small>



## Biological Description

Description	Peptide R analogue 10 (compound 10) is an analogue of the CXCR4 antagonist Peptide R, known for its enhanced antagonistic potency, specificity, and plasma stability. It inhibits CXCL12-mediated cell migration, ERK phosphorylation, and CXCR4 internalization. Peptide R analogue 10 is suitable for research on CXCR4-overexpressing leukemia and colon cancer.
Targets(IC50)	ERK,CXCR

## Preparing Stock Solutions

	1mg	5mg	10mg
1 mM	1.0614 mL	5.3072 mL	10.6144 mL
5 mM	0.2123 mL	1.0614 mL	2.1229 mL
10 mM	0.1061 mL	0.5307 mL	1.0614 mL
50 mM	0.0212 mL	0.1061 mL	0.2123 mL

Please select the appropriate solvent to prepare the stock solution, according to the solubility of the product in different solvents. Please use it as soon as possible.

Note: The dilution table applies only to solid products. For liquid products, please calculate the stock solution based on the stated concentration and/or density.

Inhibitor · Natural Compounds · Compound Libraries · Recombinant Proteins

This product is for Research Use Only · Not for Human or Veterinary or Therapeutic Use

Tel:781-999-4286 E\_mail:info@targetmol.com Address:34 Washington Street,Wellesley Hills,MA 02481