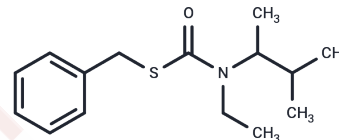


Esprocarb

Chemical Properties

CAS No. : 85785-20-2
 Formula: C₁₅H₂₃NOS
 Molecular Weight: 265.41
 Storage: Powder: -20°C for 3 years | In solvent: -80°C for 1 year
 Actual storage temperature shall be subject to the COA.



Biological Description

Description	Esprocarb is a herbicide used for pre-emergence and post-emergence weed control in rice.
Targets(IC50)	Others

Preparing Stock Solutions

	1mg	5mg	10mg
1 mM	3.7678 mL	18.8388 mL	37.6776 mL
5 mM	0.7536 mL	3.7678 mL	7.5355 mL
10 mM	0.3768 mL	1.8839 mL	3.7678 mL
50 mM	0.0754 mL	0.3768 mL	0.7536 mL

Please select the appropriate solvent to prepare the stock solution, according to the solubility of the product in different solvents. Please use it as soon as possible.

Note: The dilution table applies only to solid products. For liquid products, please calculate the stock solution based on the stated concentration and/or density.

Inhibitor · Natural Compounds · Compound Libraries · Recombinant Proteins

This product is for Research Use Only · Not for Human or Veterinary or Therapeutic Use

Tel:781-999-4286 E_mail:info@targetmol.com Address:34 Washington Street,Wellesley Hills,MA 02481