

SHP2-IN-39

Chemical Properties

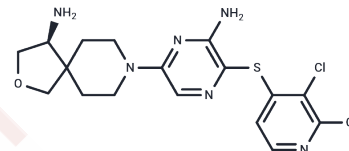
CAS No. : 1801764-98-6

Formula: C₁₇H₂₀Cl₂N₆O₅

Molecular Weight: 427.35

Storage: Powder: -20°C for 3 years | In solvent: -80°C for 1 year

Actual storage temperature shall be subject to the COA.



Biological Description

Description	SHP2-IN-39 (Example 63) is an inhibitor of SHP2, with an IC ₅₀ value of 0.007 μM. It is applicable in tumor research.
Targets(IC ₅₀)	Phosphatase

Preparing Stock Solutions

	1mg	5mg	10mg
1 mM	2.340 mL	11.700 mL	23.400 mL
5 mM	0.468 mL	2.340 mL	4.680 mL
10 mM	0.234 mL	1.170 mL	2.340 mL
50 mM	0.0468 mL	0.234 mL	0.468 mL

Please select the appropriate solvent to prepare the stock solution, according to the solubility of the product in different solvents. Please use it as soon as possible.

Note: The dilution table applies only to solid products. For liquid products, please calculate the stock solution based on the stated concentration and/or density.

Inhibitor · Natural Compounds · Compound Libraries · Recombinant Proteins

This product is for Research Use Only · Not for Human or Veterinary or Therapeutic Use

Tel: 781-999-4286 E_mail: info@targetmol.com Address: 34 Washington Street, Wellesley Hills, MA 02481