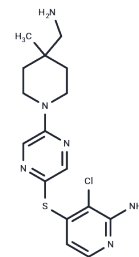


SHP2-IN-40

Chemical Properties

CAS No. : 2056002-39-0
 Formula: C₁₆H₂₁ClN₆S
 Molecular Weight: 364.90
 Storage: Powder: -20°C for 3 years | In solvent: -80°C for 1 year
 Actual storage temperature shall be subject to the COA.



Biological Description

Description	SHP2-IN-40 (Compound 25) is an SHP2 inhibitor with an AC50 of 0.0107 µM, applicable in tumor research.
Targets(IC50)	Phosphatase

Preparing Stock Solutions

	1mg	5mg	10mg
1 mM	2.7405 mL	13.7024 mL	27.4048 mL
5 mM	0.5481 mL	2.7405 mL	5.481 mL
10 mM	0.274 mL	1.3702 mL	2.7405 mL
50 mM	0.0548 mL	0.274 mL	0.5481 mL

Please select the appropriate solvent to prepare the stock solution, according to the solubility of the product in different solvents. Please use it as soon as possible.

Note: The dilution table applies only to solid products. For liquid products, please calculate the stock solution based on the stated concentration and/or density.

Inhibitor · Natural Compounds · Compound Libraries · Recombinant Proteins

This product is for Research Use Only · Not for Human or Veterinary or Therapeutic Use

Tel: 781-999-4286 E_mail: info@targetmol.com Address: 34 Washington Street, Wellesley Hills, MA 02481