

SHP2-IN-41

Chemical Properties

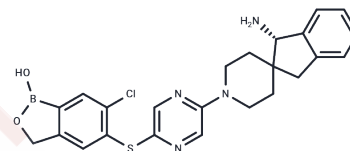
CAS No. : 3081261-84-6

Formula: C₂₄H₂₄BClN₄O₂S

Molecular Weight: 478.80

Storage: Powder: -20°C for 3 years | In solvent: -80°C for 1 year

Actual storage temperature shall be subject to the COA.



Biological Description

Description	SHP2-IN-41 (Compound 4) is an SHP2 inhibitor with an IC ₅₀ of less than 0.1 μM. This compound also exhibits an IC ₅₀ of under 0.1 μM against KYSE-520 cells and is applicable in tumor research.
Targets(IC ₅₀)	Phosphatase

Preparing Stock Solutions

	1mg	5mg	10mg
1 mM	2.0886 mL	10.4428 mL	20.8855 mL
5 mM	0.4177 mL	2.0886 mL	4.1771 mL
10 mM	0.2089 mL	1.0443 mL	2.0886 mL
50 mM	0.0418 mL	0.2089 mL	0.4177 mL

Please select the appropriate solvent to prepare the stock solution, according to the solubility of the product in different solvents. Please use it as soon as possible.

Note: The dilution table applies only to solid products. For liquid products, please calculate the stock solution based on the stated concentration and/or density.

Inhibitor · Natural Compounds · Compound Libraries · Recombinant Proteins

This product is for Research Use Only · Not for Human or Veterinary or Therapeutic Use

Tel: 781-999-4286 E_mail: info@targetmol.com Address: 34 Washington Street, Wellesley Hills, MA 02481