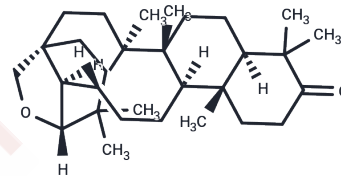


## Allobetulone

## Chemical Properties

|                   |   |
|-------------------|---|
| CAS No. :         | 28282-22-6  |
| Formula:          | C <sub>30</sub> H <sub>48</sub> O <sub>2</sub>  |
| Molecular Weight: | 440.70  |
| Storage:          | Powder: -20°C for 3 years   In solvent: -80°C for 1 year<br>Actual storage temperature shall be subject to the COA. |



## Biological Description

|                            |   |
|----------------------------|---|
| Description                | Allobetulone (N066-0059) is a TMEM16A inhibitor with an IC <sub>50</sub> of 0.24 μM, and it is utilized in cancer research. |
| Targets(IC <sub>50</sub> ) | Chloride channel  |

## Preparing Stock Solutions

|       | 1mg       | 5mg        | 10mg       |
|-------|-----------|------------|------------|
| 1 mM  | 2.2691 mL | 11.3456 mL | 22.6912 mL |
| 5 mM  | 0.4538 mL | 2.2691 mL  | 4.5382 mL  |
| 10 mM | 0.2269 mL | 1.1346 mL  | 2.2691 mL  |
| 50 mM | 0.0454 mL | 0.2269 mL  | 0.4538 mL  |

Please select the appropriate solvent to prepare the stock solution, according to the solubility of the product in different solvents. Please use it as soon as possible.

Note: The dilution table applies only to solid products. For liquid products, please calculate the stock solution based on the stated concentration and/or density.

Inhibitor · Natural Compounds · Compound Libraries · Recombinant Proteins

This product is for Research Use Only · Not for Human or Veterinary or Therapeutic Use

Tel: 781-999-4286 E\_mail: info@targetmol.com Address: 34 Washington Street, Wellesley Hills, MA 02481