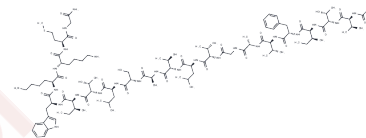


CT20p

Chemical Properties

CAS No. :	1407967-57-0
Formula:	C103H170N24O25S
Molecular Weight:	2176.66
Storage:	Keep away from moisture Powder: -20°C for 3 years In solvent: -80°C for 1 year <small>Actual storage temperature shall be subject to the COA.</small>



Biological Description

Description	CT20p is an anticancer peptide derived from the hydrophobic terminal of BaxC. It exhibits a unique cytotoxic effect independent of the full-length Bax, targeting mitochondria to induce fusion-like aggregation and mitochondrial membrane hyperpolarization. CT20p reduces $\alpha 5\beta 1$ integrin levels, inhibits F-actin polymerization, thus disrupting the cytoskeleton and preventing cell adhesion. CT20p is applicable in breast cancer research.
Targets(IC50)	Bcl-2 Family

Preparing Stock Solutions

	1mg	5mg	10mg
1 mM	0.4594 mL	2.2971 mL	4.5942 mL
5 mM	0.0919 mL	0.4594 mL	0.9188 mL
10 mM	0.0459 mL	0.2297 mL	0.4594 mL
50 mM	0.0092 mL	0.0459 mL	0.0919 mL

Please select the appropriate solvent to prepare the stock solution, according to the solubility of the product in different solvents. Please use it as soon as possible.

Note: The dilution table applies only to solid products. For liquid products, please calculate the stock solution based on the stated concentration and/or density.

Inhibitor · Natural Compounds · Compound Libraries · Recombinant Proteins

This product is for Research Use Only · Not for Human or Veterinary or Therapeutic Use

Tel: 781-999-4286 E_mail: info@targetmol.com Address: 34 Washington Street, Wellesley Hills, MA 02481