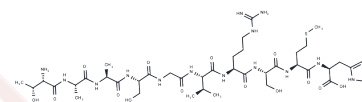


NG2 binding peptide

Chemical Properties

CAS No. :	241478-23-9
Formula:	C40H69N15O14S
Molecular Weight:	1016.13
Storage:	Keep away from moisture Powder: -20°C for 3 years In solvent: -80°C for 1 year <small>Actual storage temperature shall be subject to the COA.</small>



Biological Description

Description	NG2 binding peptide is a specific short peptide that recognizes the NG2 proteoglycan and can be obtained via phage display technology. This peptide achieves precise targeting of tumor neovasculature in vitro and in vivo through interaction with NG2 binding sites. It demonstrates significant homing ability in wild-type tumor-bearing mice but shows no localization effect in NG2 knockout mice. Due to the tissue-specific expression of NG2, the NG2 binding peptide can be applied in tumor-targeted therapy, drug delivery, and molecular imaging diagnostics.
Targets(IC50)	Others

Preparing Stock Solutions

	1mg	5mg	10mg
1 mM	0.9841 mL	4.9206 mL	9.8413 mL
5 mM	0.1968 mL	0.9841 mL	1.9683 mL
10 mM	0.0984 mL	0.4921 mL	0.9841 mL
50 mM	0.0197 mL	0.0984 mL	0.1968 mL

Please select the appropriate solvent to prepare the stock solution, according to the solubility of the product in different solvents. Please use it as soon as possible.

Note: The dilution table applies only to solid products. For liquid products, please calculate the stock solution based on the stated concentration and/or density.

Inhibitor · Natural Compounds · Compound Libraries · Recombinant Proteins

This product is for Research Use Only · Not for Human or Veterinary or Therapeutic Use

Tel: 781-999-4286 E_mail: info@targetmol.com Address: 34 Washington Street, Wellesley Hills, MA 02481