

DM-4103

Chemical Properties

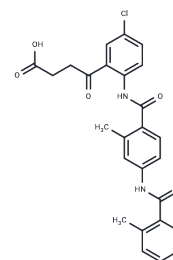
CAS No. : 1346599-56-1

Formula: C₂₆H₂₃ClN₂O₅

Molecular Weight: 478.92

Storage: Powder: -20°C for 3 years | In solvent: -80°C for 1 year

Actual storage temperature shall be subject to the COA.



Biological Description

Description	DM-4103 is a primary metabolite of Tolvaptan, predominantly metabolized by the CYP3A4 enzyme in the liver. In SCHH cells, DM-4103 inhibits the human liver transport proteins NTCP, BSEP, MRP2, MRP3, and MRP4 with IC ₅₀ values of 16.3, 4.15, 51.0, 44.6, and 4.26 μM, respectively, and affects bile acid transport. DM-4103 is applicable for research in autosomal dominant polycystic kidney disease (ADPKD).
Targets(IC ₅₀)	P-gp

Preparing Stock Solutions

	1mg	5mg	10mg
1 mM	2.088 mL	10.4402 mL	20.8803 mL
5 mM	0.4176 mL	2.088 mL	4.1761 mL
10 mM	0.2088 mL	1.044 mL	2.088 mL
50 mM	0.0418 mL	0.2088 mL	0.4176 mL

Please select the appropriate solvent to prepare the stock solution, according to the solubility of the product in different solvents. Please use it as soon as possible.

Note: The dilution table applies only to solid products. For liquid products, please calculate the stock solution based on the stated concentration and/or density.

Inhibitor · Natural Compounds · Compound Libraries · Recombinant Proteins

This product is for Research Use Only · Not for Human or Veterinary or Therapeutic Use

Tel: 781-999-4286

E_mail: info@targetmol.com

Address: 34 Washington Street, Wellesley Hills, MA 02481