

KMS99220

## Chemical Properties

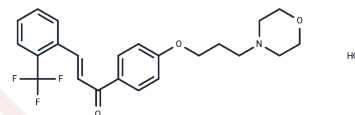
CAS No. : 1478585-60-2

Formula: C<sub>23</sub>H<sub>25</sub>ClF<sub>3</sub>NO<sub>3</sub>

Molecular Weight: 455.90

Storage: Powder: -20°C for 3 years | In solvent: -80°C for 1 year

Actual storage temperature shall be subject to the COA.



## Biological Description

Description	KMS99220 is an orally active Keap-1 activator that acts as an Nrf2 inhibitor protein. It enhances Nrf2 nuclear translocation, increases the expression of antioxidant enzymes (such as heme oxygenase-1) and proteasome subunit genes, and alleviates oxidative stress and protein aggregation damage. KMS99220 is applicable for research in Parkinson's disease (PD).
Targets(IC50)	Nrf2

## Preparing Stock Solutions

	1mg	5mg	10mg
1 mM	2.1935 mL	10.9673 mL	21.9346 mL
5 mM	0.4387 mL	2.1935 mL	4.3869 mL
10 mM	0.2193 mL	1.0967 mL	2.1935 mL
50 mM	0.0439 mL	0.2193 mL	0.4387 mL

Please select the appropriate solvent to prepare the stock solution, according to the solubility of the product in different solvents. Please use it as soon as possible.

Note: The dilution table applies only to solid products. For liquid products, please calculate the stock solution based on the stated concentration and/or density.

Inhibitor · Natural Compounds · Compound Libraries · Recombinant Proteins

This product is for Research Use Only · Not for Human or Veterinary or Therapeutic Use

Tel: 781-999-4286

E\_mail: info@targetmol.com

Address: 34 Washington Street, Wellesley Hills, MA 02481