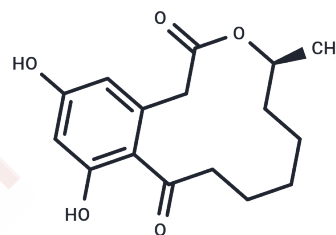


Curvularin

Chemical Properties

CAS No. :	10140-70-2
Formula:	C ₁₆ H ₂₀ O ₅
Molecular Weight:	292.33
Storage:	Powder: -20°C for 3 years In solvent: -80°C for 1 year Actual storage temperature shall be subject to the COA.



Biological Description

Description	Curvularin ((S)-Curvularin) is a quorum-sensing antagonist of Pseudomonas aeruginosa RhIR extractable from Curvularia lunata, a mycotoxin with anti-inflammatory activity, inhibition of cytokine-induced NO synthase, and inhibition of lipopolysaccharide-induced inflammation in antimyelocytes. study inflammation.
Targets(IC50)	NO Synthase

Preparing Stock Solutions

	1mg	5mg	10mg
1 mM	3.4208 mL	17.104 mL	34.2079 mL
5 mM	0.6842 mL	3.4208 mL	6.8416 mL
10 mM	0.3421 mL	1.7104 mL	3.4208 mL
50 mM	0.0684 mL	0.3421 mL	0.6842 mL

Please select the appropriate solvent to prepare the stock solution, according to the solubility of the product in different solvents. Please use it as soon as possible.

Note: The dilution table applies only to solid products. For liquid products, please calculate the stock solution based on the stated concentration and/or density.

Reference

- Zhao Q, Feng M, Jin S, Liu X, Li S, Guo J, Cheng X, Zhou G, Yu X. 10,11-Dehydrocurvularin attenuates inflammation by suppressing NLRP3 inflammasome activation. Chin J Nat Med. 2023 Mar;21(3):163-171.
- Yan H, Fu Z, Lin P, Gu Y, Cao J, Li Y. Inhibition of human glioblastoma multiforme cells by 10,11-dehydrocurvularin through the MMP-2 and PI3K/AKT signaling pathways. Eur J Pharmacol. 2022 Dec 5;936:175348.
- Kumar CG, et al. Metabolite profiling and biological activities of bioactive compounds produced by Chrysosporium lobatum strain BK-3 isolated from Kaziranga National Park, Assam, India. Springerplus. 2013 Dec;2(1):122.

Inhibitor · Natural Compounds · Compound Libraries · Recombinant Proteins

This product is for Research Use Only · Not for Human or Veterinary or Therapeutic Use

Tel:781-999-4286 E_mail:info@targetmol.com Address:34 Washington Street,Wellesley Hills,MA 02481