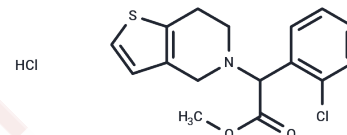


(±)-Clopidogrel (hydrochloride)**Chemical Properties**

CAS No. :	130209-90-4
Formula:	C ₁₆ H ₁₇ Cl ₂ N ₂ O ₂ S
Molecular Weight:	358.28
Storage:	Powder: -20°C for 3 years In solvent: -80°C for 1 year Actual storage temperature shall be subject to the COA.

**Biological Description**

Description	Clopidogrel is an antithrombic compound whose active metabolite is a selective, irreversible antagonist of the platelet purinergic P ₂ Y ₁₂ receptor (IC ₅₀ = 100 nM). Clopidogrel inhibits ADP-induced platelet aggregation ex vivo and functions as a prodrug whereupon biotransformation to its active metabolite via CYP2C19 in the liver enables its anti-aggregating activity. Marketed under the name Plavix, clopidogrel in combination with aspirin has been shown to be beneficial in the prevention of vascular ischemic events for patients without deficiencies in CYP2C19-related metabolism.
Targets(IC ₅₀)	Others,P ₂ Y Receptor

Solubility Information

Solubility	DMF: 20 mg/mL (55.82 mM),Sonication is recommended. DMSO:PBS(pH 7.2) (1:2): 0.33 mg/mL (0.92 mM),Sonication is recommended. DMSO: 20 mg/mL (55.82 mM),Sonication is recommended. Ethanol: 5 mg/mL (13.96 mM),Sonication is recommended. (< 1 mg/ml refers to the product slightly soluble or insoluble)
------------	---

Preparing Stock Solutions

	1mg	5mg	10mg
1 mM	2.7911 mL	13.9556 mL	27.9111 mL
5 mM	0.5582 mL	2.7911 mL	5.5822 mL
10 mM	0.2791 mL	1.3956 mL	2.7911 mL
50 mM	0.0558 mL	0.2791 mL	0.5582 mL

Please select the appropriate solvent to prepare the stock solution, according to the solubility of the product in different solvents. Please use it as soon as possible.

Note: The dilution table applies only to solid products. For liquid products, please calculate the stock solution based on the stated concentration and/or density.

Inhibitor · Natural Compounds · Compound Libraries · Recombinant Proteins

This product is for Research Use Only · Not for Human or Veterinary or Therapeutic Use

Tel:781-999-4286 E_mail:info@targetmol.com Address:34 Washington Street,Wellesley Hills,MA 02481