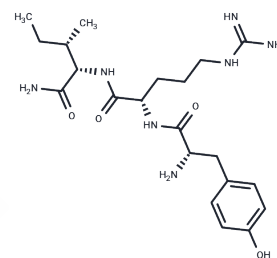


## Antho-riamide II

## Chemical Properties

CAS No. :	139026-55-4
Formula:	C <sub>21</sub> H <sub>35</sub> N <sub>7</sub> O <sub>4</sub>
Molecular Weight:	449.55
Storage:	Powder: -20°C for 3 years   In solvent: -80°C for 1 year Actual storage temperature shall be subject to the COA.



## Biological Description

Description	Antho-riamide II is an inactive peptide isolated from sea anemone <i>Anthopleura elegantissima</i> .
Targets(IC50)	Others

## Preparing Stock Solutions

	1mg	5mg	10mg
1 mM	2.2244 mL	11.1222 mL	22.2445 mL
5 mM	0.4449 mL	2.2244 mL	4.4489 mL
10 mM	0.2224 mL	1.1122 mL	2.2244 mL
50 mM	0.0445 mL	0.2224 mL	0.4449 mL

Please select the appropriate solvent to prepare the stock solution, according to the solubility of the product in different solvents. Please use it as soon as possible.

Note: The dilution table applies only to solid products. For liquid products, please calculate the stock solution based on the stated concentration and/or density.

## Reference

Nothacker HP, Rinehart KL, McFarlane ID, Grimmelikhuijzen CJ. Isolation of two novel neuropeptides from sea anemones: the unusual, biologically active L-3-phenyllactyl-Tyr-Arg-Ile-NH<sub>2</sub> and its des-phenyllactyl fragment Tyr-Arg-Ile-NH<sub>2</sub>. *Peptides*. 1991 Nov-Dec;12(6):1165-73. PubMed PMID: 1821096.

**Inhibitor · Natural Compounds · Compound Libraries · Recombinant Proteins**

This product is for Research Use Only · Not for Human or Veterinary or Therapeutic Use

Tel:781-999-4286 E\_mail:info@targetmol.com Address:34 Washington Street,Wellesley Hills,MA 02481