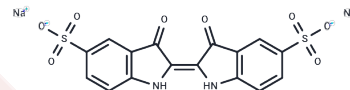


Indigo carmine

Chemical Properties

CAS No. :	860-22-0
Formula:	C ₁₆ H ₈ N ₂ Na ₂ O ₈ S ₂
Molecular Weight:	466.35
Storage:	Keep away from direct sunlight Powder: -20°C for 3 years In solvent: -80°C for 1 year <small>Actual storage temperature shall be subject to the COA.</small>



Biological Description

Description	Indigo carmine (NSC-8646) is an indolesulfonic acid. It is used as a dye in renal function testing for the detection of nitrates and chlorates.
Targets(IC50)	Others
Animal Research	Instructions Operation steps 1. Dissolve Indigo Carmine in saline or PBS. 2. Inject intravenously or locally into the target area. Common dose: 0.25-3 mg/kg (adjusted according to animal species and experimental requirements).

Solubility Information

Solubility	H ₂ O: 18 mg/mL (38.6 mM), Sonication is recommended. DMSO: Soluble, (< 1 mg/ml refers to the product slightly soluble or insoluble)
------------	--

Preparing Stock Solutions

	1mg	5mg	10mg
1 mM	2.1443 mL	10.7216 mL	21.4431 mL
5 mM	0.4289 mL	2.1443 mL	4.2886 mL
10 mM	0.2144 mL	1.0722 mL	2.1443 mL
50 mM	0.0429 mL	0.2144 mL	0.4289 mL

Please select the appropriate solvent to prepare the stock solution, according to the solubility of the product in different solvents. Please use it as soon as possible.

Note: The dilution table applies only to solid products. For liquid products, please calculate the stock solution based on the stated concentration and/or density.

Reference

- Albuquerque AAS, et al. Indigo Carmine Hemodynamic Studies to Treat Vasoplegia Induced by Compound 48/80 in a Swine Model of Anaphylaxis. *Braz J Cardiovasc Surg.* 2022 Mar 10;37(1):20-28.
- Kesraoui A, Selmi T, Seffen M, Brouers F. Influence of alternating current on the adsorption of indigo carmine. *Environ Sci Pollut Res Int.* 2017 Apr;24(11):9940-9950.
- Numata N, Oka S, Tanaka S, Yoshifuku Y, Miwata T, Sanomura Y, Arihiro K, Shimamoto F, Chayama K. Useful condition of chromoendoscopy with indigo carmine and acetic acid for identifying a demarcation line prior to endoscopic submucosal dissection for early gastric cancer. *BMC Gastroenterol.* 2016 Jul 19;16(1):72.
- Ahn D, Ho Sohn J, Park J, Eun Lee J. Ultrasound-guided intratumoral indigo carmine injection for intraoperative, surgeon-performed tumor localization. *Head Neck.* 2014 Sep;36(9):1317-23. doi: 10.1002/hed.23455. Epub 2013 Nov 12. PubMed PMID: 23956066.

Inhibitor · Natural Compounds · Compound Libraries · Recombinant Proteins

This product is for Research Use Only · Not for Human or Veterinary or Therapeutic Use

Tel:781-999-4286 E_mail:info@targetmol.com Address:34 Washington Street,Wellesley Hills,MA 02481