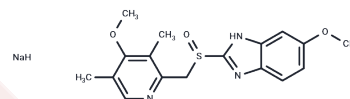


## (R)-Omeprazole (sodium salt)

## Chemical Properties

CAS No. :	161796-77-6
Formula:	C17H19N3NaO3S
Molecular Weight:	368.41
Storage:	Powder: -20°C for 3 years   In solvent: -80°C for 1 year Actual storage temperature shall be subject to the COA.



## Biological Description

Description	(R)-Omeprazole is the inactive isomer of omeprazole, a gastric proton-pump inhibitor. A stereoselective hydroxylation of (R)-omeprazole is mediated primarily by cytochrome P450 (CYP) 2C19, whereas CYP3A4 favors sulfoxidation of the active (S)-enantiomer. (R)-Omeprazole has been shown to act as a reversible direct-acting and metabolism-dependent inhibitor of CYP2C19 in pooled human liver microsomes (IC <sub>50</sub> = 8.1 μM).
Targets(IC <sub>50</sub> )	Others, Cytochromes P450

## Solubility Information

Solubility	Ethanol: 1 mg/mL (2.71 mM), Sonication is recommended. DMSO: 5 mg/mL (13.57 mM), Sonication is recommended. PBS (pH 7.2): 5 mg/mL (13.57 mM), Sonication is recommended. DMF: 5 mg/mL (13.57 mM), Sonication is recommended. ( $< 1$ mg/ml refers to the product slightly soluble or insoluble)
------------	---

## Preparing Stock Solutions

	1mg	5mg	10mg
1 mM	2.7144 mL	13.5718 mL	27.1437 mL
5 mM	0.5429 mL	2.7144 mL	5.4287 mL
10 mM	0.2714 mL	1.3572 mL	2.7144 mL
50 mM	0.0543 mL	0.2714 mL	0.5429 mL

Please select the appropriate solvent to prepare the stock solution, according to the solubility of the product in different solvents. Please use it as soon as possible.

Note: The dilution table applies only to solid products. For liquid products, please calculate the stock solution based on the stated concentration and/or density.

**Inhibitor · Natural Compounds · Compound Libraries · Recombinant Proteins**

This product is for Research Use Only · Not for Human or Veterinary or Therapeutic Use

Tel:781-999-4286 E\_mail:info@targetmol.com Address:34 Washington Street,Wellesley Hills,MA 02481