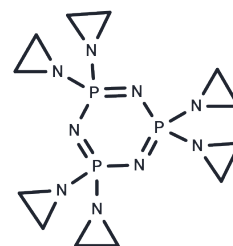


Apholate

Chemical Properties

CAS No. :	52-46-0
Formula:	C ₁₂ H ₂₄ N ₉ P ₃
Molecular Weight:	387.30
Storage:	Powder: -20°C for 3 years In solvent: -80°C for 1 year Actual storage temperature shall be subject to the COA.



Biological Description

Description	Apholate is used in pesticides that inhibit the organism's reproduction.
Targets(IC50)	Others

Preparing Stock Solutions

	1mg	5mg	10mg
1 mM	2.582 mL	12.9099 mL	25.8198 mL
5 mM	0.5164 mL	2.582 mL	5.164 mL
10 mM	0.2582 mL	1.291 mL	2.582 mL
50 mM	0.0516 mL	0.2582 mL	0.5164 mL

Please select the appropriate solvent to prepare the stock solution, according to the solubility of the product in different solvents. Please use it as soon as possible.

Note: The dilution table applies only to solid products. For liquid products, please calculate the stock solution based on the stated concentration and/or density.

Reference

Haqqi TM. Sister-chromatid exchanges and chromosomal aberrations in lymphocytes of male albino rats treated with an alkylating agent, apholate (NSC 26, 812; ENT 26, 316). *Mutat Res.* 1984 Nov-Dec;141(3-4):175-81. PubMed PMID: 6239979.

Haqqi TM, Adhami UM. Testicular damage and change in serum LDH isozyme pattern induced by multiple sub-lethal doses of apholate in albino rats. *Toxicol Lett.* 1982 Jul;12(2-3):199-205. PubMed PMID: 6214049.

Mittal PK, Sheikher C, Nath V. Cytochemical changes induced by apholate, tepa and hempa during vitellogenesis in *Locusta migratoria*. *Cytobios.* 1980;28(111-112):161-4. PubMed PMID: 6163593.

Haqqi TM, Adhami UM. Effect of apholate (ENT 26316; NSC 26812) on nucleic acids, total protein content & activity levels of aminotransferases (GOT, GPT), alkaline phosphatase & 5'-nucleotidase in liver of male albino rats. *Indian J Exp Biol.* 1979 May;17(5):488-92. PubMed PMID: 230151.

Inhibitor · Natural Compounds · Compound Libraries · Recombinant Proteins

This product is for Research Use Only · Not for Human or Veterinary or Therapeutic Use

Tel: 781-999-4286 E_mail: info@targetmol.com Address: 34 Washington Street, Wellesley Hills, MA 02481