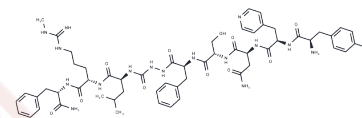


KISS1-305

Chemical Properties

CAS No. : 872717-97-0
 Formula: C56H76N16O12
 Molecular Weight: 1165.3
 Storage: Keep away from moisture
 Powder: -20°C for 3 years | In solvent: -80°C for 1 year
 Actual storage temperature shall be subject to the COA.



Biological Description

Description	KISS1-305, the Metastin/Kisspeptin analog, is a prototype peptide and chemical probe that resists plasma protease degradation but has suboptimal KISS1R agonistic activity in vitro.
Targets(IC50)	Kisspeptin

Preparing Stock Solutions

	1mg	5mg	10mg
1 mM	0.8581 mL	4.2907 mL	8.5815 mL
5 mM	0.1716 mL	0.8581 mL	1.7163 mL
10 mM	0.0858 mL	0.4291 mL	0.8581 mL
50 mM	0.0172 mL	0.0858 mL	0.1716 mL

Please select the appropriate solvent to prepare the stock solution, according to the solubility of the product in different solvents. Please use it as soon as possible.

Note: The dilution table applies only to solid products. For liquid products, please calculate the stock solution based on the stated concentration and/or density.

Reference

Matsui H, et al. Chronic administration of the metastin/kisspeptin analog KISS1-305 or the investigational agent TAK-448 suppresses hypothalamic pituitary gonadal function and depletes plasma testosterone in adult male rats. *Endocrinology*. 2012 Nov;153(11):5297-308.

Inhibitor · Natural Compounds · Compound Libraries · Recombinant Proteins

This product is for Research Use Only · Not for Human or Veterinary or Therapeutic Use

Tel: 781-999-4286 E_mail: info@targetmol.com Address: 34 Washington Street, Wellesley Hills, MA 02481