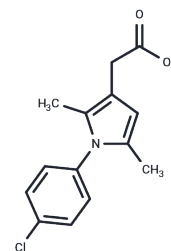


## Clopirac

## Chemical Properties

|                   |                                                                                                                     |
|-------------------|---------------------------------------------------------------------------------------------------------------------|
| CAS No. :         | 42779-82-8                                                                                                          |
| Formula:          | C <sub>14</sub> H <sub>14</sub> ClNO <sub>2</sub>                                                                   |
| Molecular Weight: | 263.72                                                                                                              |
| Storage:          | Powder: -20°C for 3 years   In solvent: -80°C for 1 year<br>Actual storage temperature shall be subject to the COA. |



## Biological Description

|               |                                                                                                                                                                                                    |
|---------------|----------------------------------------------------------------------------------------------------------------------------------------------------------------------------------------------------|
| Description   | Clopirac belongs to the pyrrole class and acts as a prostaglandin synthetase inhibitor. Clopirac is considered to have anti-inflammatory activity and can be regarded as a derivative of ibufenac. |
| Targets(IC50) | PGE Synthase                                                                                                                                                                                       |

## Preparing Stock Solutions

|       | 1mg       | 5mg        | 10mg      |
|-------|-----------|------------|-----------|
| 1 mM  | 3.7919 mL | 18.9595 mL | 37.919 mL |
| 5 mM  | 0.7584 mL | 3.7919 mL  | 7.5838 mL |
| 10 mM | 0.3792 mL | 1.896 mL   | 3.7919 mL |
| 50 mM | 0.0758 mL | 0.3792 mL  | 0.7584 mL |

Please select the appropriate solvent to prepare the stock solution, according to the solubility of the product in different solvents. Please use it as soon as possible.

Note: The dilution table applies only to solid products. For liquid products, please calculate the stock solution based on the stated concentration and/or density.

**Inhibitor · Natural Compounds · Compound Libraries · Recombinant Proteins**

This product is for Research Use Only · Not for Human or Veterinary or Therapeutic Use

Tel: 781-999-4286 E\_mail: info@targetmol.com Address: 34 Washington Street, Wellesley Hills, MA 02481