

Benzyl propargyl ether

Chemical Properties

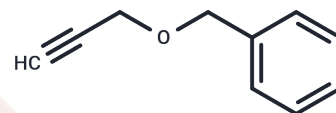
CAS No. : 4039-82-1

Formula: C₁₀H₁₀O

Molecular Weight: 146.19

Storage: Powder: -20°C for 3 years | In solvent: -80°C for 1 year

Actual storage temperature shall be subject to the COA.



Biological Description

Description	Benzyl propargyl ether is a versatile synthetic building block characterized by the linear formula C ₆ H ₅ CH ₂ OCH ₂ C≡CH and defined by its terminal alkyne functionality, which enables participation in diverse carbon-carbon and carbon-heteroatom bond-forming reactions. Benzyl propargyl ether is widely used in the synthesis of substituted carbocyclic aromatic frameworks, pharmaceutical intermediates, and advanced polymeric materials. Benzyl propargyl ether also serves as a valuable precursor in copper(I)-catalyzed azide-alkyne cycloaddition (CuAAC) click chemistry for rapid assembly of functional dendrimers and macromolecules. In carbohydrate chemistry, Benzyl propargyl ether functions as a sterically minimal O-protecting group, and its use at the O-2 position of 4,6-O-benzylidene-protected mannosyl donors enables exceptionally high β-selectivity during challenging glycosylation reactions, supporting efficient synthesis of complex oligosaccharides and glycans.
Targets(IC50)	Others

Preparing Stock Solutions

	1mg	5mg	10mg
1 mM	6.8404 mL	34.2021 mL	68.4041 mL
5 mM	1.3681 mL	6.8404 mL	13.6808 mL
10 mM	0.684 mL	3.4202 mL	6.8404 mL
50 mM	0.1368 mL	0.684 mL	1.3681 mL

Please select the appropriate solvent to prepare the stock solution, according to the solubility of the product in different solvents. Please use it as soon as possible.

Note: The dilution table applies only to solid products. For liquid products, please calculate the stock solution based on the stated concentration and/or density.

Inhibitor · Natural Compounds · Compound Libraries · Recombinant Proteins

This product is for Research Use Only · Not for Human or Veterinary or Therapeutic Use

Tel:781-999-4286 E_mail:info@targetmol.com Address:34 Washington Street,Wellesley Hills,MA 02481