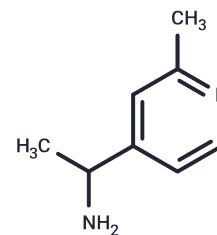


1-(2-Methylpyridin-4-yl)ethan-1-amine

Chemical Properties

CAS No. :	114919-76-5
Formula:	C ₈ H ₁₂ N ₂
Molecular Weight:	136.2
Storage:	Powder: -20°C for 3 years In solvent: -80°C for 1 year Actual storage temperature shall be subject to the COA.



Biological Description

Description	1-(2-Methylpyridin-4-yl)ethan-1-amine serves as a key synthetic intermediate for the preparation of a wide range of biologically and chemically active compounds. Owing to the versatile and potent reactivity of 1-(2-Methylpyridin-4-yl)ethan-1-amine, 1-(2-Methylpyridin-4-yl)ethan-1-amine enables the development of functionalized derivatives and complex molecular scaffolds, therefore contributing to advanced research in biomedical and pharmaceutical sciences, as well as mechanistic studies in organic and medicinal chemistry.
Targets(IC50)	Others

Preparing Stock Solutions

	1mg	5mg	10mg
1 mM	7.3421 mL	36.7107 mL	73.4214 mL
5 mM	1.4684 mL	7.3421 mL	14.6843 mL
10 mM	0.7342 mL	3.6711 mL	7.3421 mL
50 mM	0.1468 mL	0.7342 mL	1.4684 mL

Please select the appropriate solvent to prepare the stock solution, according to the solubility of the product in different solvents. Please use it as soon as possible.

Note: The dilution table applies only to solid products. For liquid products, please calculate the stock solution based on the stated concentration and/or density.

Inhibitor · Natural Compounds · Compound Libraries · Recombinant Proteins

This product is for Research Use Only · Not for Human or Veterinary or Therapeutic Use

Tel: 781-999-4286 E_mail: info@targetmol.com Address: 34 Washington Street, Wellesley Hills, MA 02481