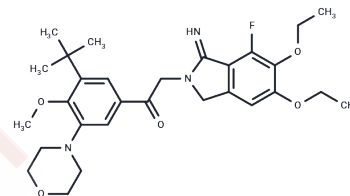


## Atopaxar

## Chemical Properties

CAS No. :	751475-53-3
Formula:	C <sub>29</sub> H <sub>38</sub> FN <sub>3</sub> O <sub>5</sub>
Molecular Weight:	527.63
Storage:	Powder: -20°C for 3 years   In solvent: -80°C for 1 year Actual storage temperature shall be subject to the COA.



## Biological Description

Description	Atopaxar (E5555), a reversible PAR-1 thrombin receptor antagonist, interferes with platelet signaling. Atopaxar has been investigated for the treatment of Coronary Artery Disease and Acute Coronary Syndrome.
Targets(IC50)	Apoptosis, Protease-activated Receptor, JAK
Kinase Assay	Kinase assays: WHI-P154 is tested in kinase assays. The panel of kinases is selected to broadly cover the kinome, providing a good approximation of specificity. For all kinases, recombinant rat (IKK $\beta$ ) or human (all others), full-length or GST-kinase domain fusion proteins, are used. WHI-P154 is inactive (concentration that inhibits response by 50% [IC <sub>50</sub> ] > 30 $\mu$ M) for the following kinases: AKT, AuroraA, cdk2, cdk6, CHK1, FGFR1, GSK3b, IKKb, IKKi, INSR, MAPK1, MAPKAP-K2, MASK, MET, PAK4, PDK1, PKCb, ROCK1, TaoK3, TrkA.

## Solubility Information

Solubility	DMSO: 30 mg/mL (56.86 mM), Sonication is recommended. (< 1 mg/ml refers to the product slightly soluble or insoluble)
In vivo Formulation	10% DMSO+40% PEG300+5% Tween 80+45% Saline: 2 mg/mL (3.79 mM), Sonication is recommended. <i>Please add the solvents sequentially, clarifying the solution as much as possible before adding the next one. Dissolve by heating and/or sonication if necessary. Working solution is recommended to be prepared and used immediately. The formulation provided above is for reference purposes only. In vivo formulations may vary and should be modified based on specific experimental conditions.</i>

### Preparing Stock Solutions

---

	<b>1mg</b>	<b>5mg</b>	<b>10mg</b>
1 mM	1.8953 mL	9.4763 mL	18.9527 mL
5 mM	0.3791 mL	1.8953 mL	3.7905 mL
10 mM	0.1895 mL	0.9476 mL	1.8953 mL
50 mM	0.0379 mL	0.1895 mL	0.3791 mL

---

Please select the appropriate solvent to prepare the stock solution, according to the solubility of the product in different solvents. Please use it as soon as possible.

Note: The dilution table applies only to solid products. For liquid products, please calculate the stock solution based on the stated concentration and/or density.

#### Reference

Changelian PS, et al. Blood. 2008 Feb 15;111(4):2155-7.

**Inhibitor · Natural Compounds · Compound Libraries · Recombinant Proteins**

This product is for Research Use Only · Not for Human or Veterinary or Therapeutic Use

Tel:781-999-4286 E\_mail:info@targetmol.com Address:34 Washington Street,Wellesley Hills,MA 02481