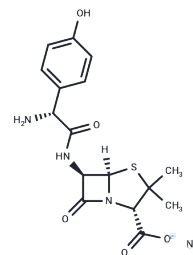


Amoxicillin Sodium

Chemical Properties

CAS No. :	34642-77-8
Formula:	C ₁₆ H ₁₈ N ₃ O ₅ S·Na
Molecular Weight:	387.39
Storage:	Store at low temperature Powder: -20°C for 3 years In solvent: -80°C for 1 year <i>Actual storage temperature shall be subject to the COA.</i>



Biological Description

Description	Amoxicillin Sodium (Clavulanate) is a moderate- spectrum, bacteriolytic, β -lactam antibiotic.
Targets(IC50)	Antibacterial, Antibiotic

Solubility Information

Solubility	H ₂ O: 250 mg/mL (645.34 mM), Sonication is recommended. Ethanol: < 1 mg/mL (insoluble or slightly soluble), DMSO: 100 mg/mL (258.14 mM), Sonication is recommended. (< 1 mg/ml refers to the product slightly soluble or insoluble)
In vivo Formulation	10% DMSO+40% PEG300+5% Tween 80+45% Saline: 4 mg/mL (10.33 mM), Sonication is recommended. <i>Please add the solvents sequentially, clarifying the solution as much as possible before adding the next one. Dissolve by heating and/or sonication if necessary. Working solution is recommended to be prepared and used immediately. The formulation provided above is for reference purposes only. In vivo formulations may vary and should be modified based on specific experimental conditions.</i>

Preparing Stock Solutions

	1mg	5mg	10mg
1 mM	2.5814 mL	12.9069 mL	25.8138 mL
5 mM	0.5163 mL	2.5814 mL	5.1628 mL
10 mM	0.2581 mL	1.2907 mL	2.5814 mL
50 mM	0.0516 mL	0.2581 mL	0.5163 mL

Please select the appropriate solvent to prepare the stock solution, according to the solubility of the product in different solvents. Please use it as soon as possible.

Note: The dilution table applies only to solid products. For liquid products, please calculate the stock solution based on the stated concentration and/or density.

Reference

Bystrzycka W, et al. Cent Eur J Immunol. 2016;41(1):1-5.

Rajapakse NS, et al. Paediatr Child Health. 2016 Mar;21(2):65-6.

Inhibitor · Natural Compounds · Compound Libraries · Recombinant Proteins

This product is for Research Use Only · Not for Human or Veterinary or Therapeutic Use

Tel: 781-999-4286 E_mail: info@targetmol.com Address: 34 Washington Street, Wellesley Hills, MA 02481